

THE POCKET GUIDE TO THE SAMSUNG NX

HINTS & TIPS FOR GREAT PHOTOGRAPHS



TAKE GREAT PICTURES OF:

- YOUR FAMILY
- PARTIES
- LANDSCAPES
- HOLIDAYS & TRAVEL
- NATURE, PLUS LOTS MORE...



WELCOME...

...to our pocket guide to photography with the Samsung NX series of digital cameras

We believe that taking memorable, fun and interesting pictures should be easy. Your camera should be an extension of yourself so it needs to be intuitive, easy to use and produce superb results.

Our NX range of interchangeable lens cameras embody this belief and we have designed them to fit in with your lifestyle, with a range of features that, at a touch of a button, enables even the most inexperienced picture taker to produce results a professional would be proud of. All with the size and convenience of a compact but the image quality and performance of a digital SLR camera.

In this guide to the NX series we have taken 25 of the most frequently experienced situations that you would take your NX to and have given you jargon-free hints, tips, ideas and camera shortcuts to inspire you, build confidence with your camera and make your experience a more enjoyable one.

We have also included a more general advice section on the basics of photography, with specifics relating to the NX range, including advice on some accessories worth considering, jargon busters for each section and a detailed anatomy of the advanced and beginner models.

FREE: ELECTRONIC MAGAZINE

Sign up to our 'Capture Your World' e-magazine and every quarter you'll get advice, news, photographic hints & tips delivered straight to your inbox.

Capture
YOUR WORLD

For more information go to:
www.captureyourworld.co.uk

CONTENTS

4 Anatomy: Beginner NX

A detailed look at the camera's external features

6 Anatomy: Advanced NX

A detailed look at the camera's external features

8 Menu Help

How to use the Scene mode and Picture Wizard on the NX system of cameras

9 The NX System

Your guide to understanding the features on your NX camera

- 10 i-Function
- 12 Aperture
- 14 Shutter
- 16 ISO
- 18 Autofocus
- 20 Exposure
- 22 Colour
- 24 Flash
- 26 Smart Filters
- 28 Photo Style Selector
- 30 Jargon Buster**

31 Family & friends

From lifestyle portraits to sporting action, how to get the most from your Samsung NX

- 32 Babies
- 34 Children
- 36 Groups
- 38 Parties
- 40 Weddings
- 42 Sports day
- 44 At home
- 46 Nighttime
- 48 Your pet
- 50 Jargon Buster**

51 Holidays & travel

Simple-to-follow photo tips for taking memorable pictures while on our vacations

- 52 In the town
- 54 The beach
- 56 On safari
- 58 Ice & snow
- 60 Night life
- 62 Markets
- 64 Funfairs
- 66 Jargon Buster**

67 Scenics & nature

Read our helpful guide to getting out and about with the NX camera system

- 68 Walking
- 70 Sunsets
- 72 The park
- 74 The beach
- 76 Flowers
- 78 The woods
- 80 Panoramas
- 82 Jargon Buster**

83 NX accessories & lenses

Enhance the fun and enjoyment of the NX system with these optional accessories, from camera bags to a host of additional lenses

BEGINNER

Let's take a look at the key functions of the buttons and dials of Samsung's entry-level NX digital camera

DISP Scroll through the information displayed on the rear screen

FN This gives quick access to some of the camera's functions that are specific to the exposure or Scene modes



DISPLAY Review your images and movies and navigate the menu on the super-bright, pin sharp, colourful 3" AMOLED display

MENU Press this to access the camera's complete list of options and customisation

PLAY Review the images and movies saved on your SD memory card

MULTIFUNCTION JOG-WHEEL Make fast adjustments to the focus mode, white balance, ISO sensitivity and the metering mode. Also used to navigate the menu in the display and change exposure

FOCUS ASSIST LIGHT In low light this LED shines to aid accurate focusing

LENS RELEASE BUTTON Press and hold this to remove and exchange lenses



MICROPHONE Record the sound of your HD movies and for stills too

ZOOM WHEEL This enables you to check the focusing and detail of your captured image, or to change camera settings



SMART SHOE For adding optional Samsung accessories such as an EVF, flash or GPS unit

MAIN CONTROL DIAL Use this to change the camera's automatic exposure and Scene modes

SPEAKER Listen to your movies when in playback

ADVANCED

Let's take a look at the key functions of the buttons and dials of the advanced-level Samsung NX digital camera

MENU This is to access the camera's complete list of options and customisation

ELECTRONIC VIEWFINDER This multifunction viewfinder enables you to compose your images and adjust settings. What you see is what you get, unlike optical viewfinders

FN This gives quick access to some of the camera's functions that are specific to the exposure or Scene modes



DISPLAY Review your images and movies and navigate the menu on the super-bright, pin sharp, colourful 3" AMOLED display

DISP Scroll through the information displayed on the LCD or press and hold for the built-in camera guide when in the Menu

PLAY Review the images and movies saved on your SD memory card

MULTIFUNCTION DIAL Make fast adjustments to the focus modes, white balance, ISO sensitivity and the metering mode. This is also used to navigate the menu in the display

FOCUS ASSIST LIGHT In low light this LED shines to aid accurate focusing

MICROPHONE Record the sound of your HD movies



LENS RELEASE BUTTON Press and hold to remove your lenses

FLASH ON Press this to use the automatic pop-up flash for shooting in low light or to get rid of harsh shadows

MAIN CONTROL DIAL Use this to change the camera's automatic exposure and scene modes

ZOOM BUTTONS These enable you to check the focusing and detail of your captured image, or to change the drive mode from a single image to one of the burst modes

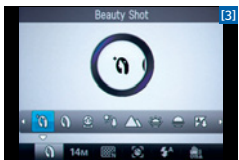


SPEAKER Listen to your movies when in playback

SMART SHOE For adding optional Samsung accessories such as a flashgun or a GPS unit

MENU HELP

Here's how to access the Scene modes and Picture Wizard within your NX series cameras



SCENE MODES

There are 13 Scene modes to choose from, covering a wide range of subjects from Beach & Snow to Fireworks. To access them, turn the top mode dial to 'Scene' [1] and then press the **Fn** button [2]. Using the large circular button [2], press 'up' and then scroll left and right to select the desired shooting mode. This is what the Scene mode menu looks like [3].

PICTURE WIZARD

This option allows you to add creative effects to your images and movies before taking them. From 'Vivid' colour to 'Classic' black & whites, and all are customisable. Picture Wizard works in P, A, S, M & Movie mode on the main control dial [1]. After choosing your mode, press the Picture Wizard button [2] or the **Fn** button (scrolling through to the **Fn** icon in the menu) and then scroll through the desired effect you'd like. This is the Picture Wizard menu [3].



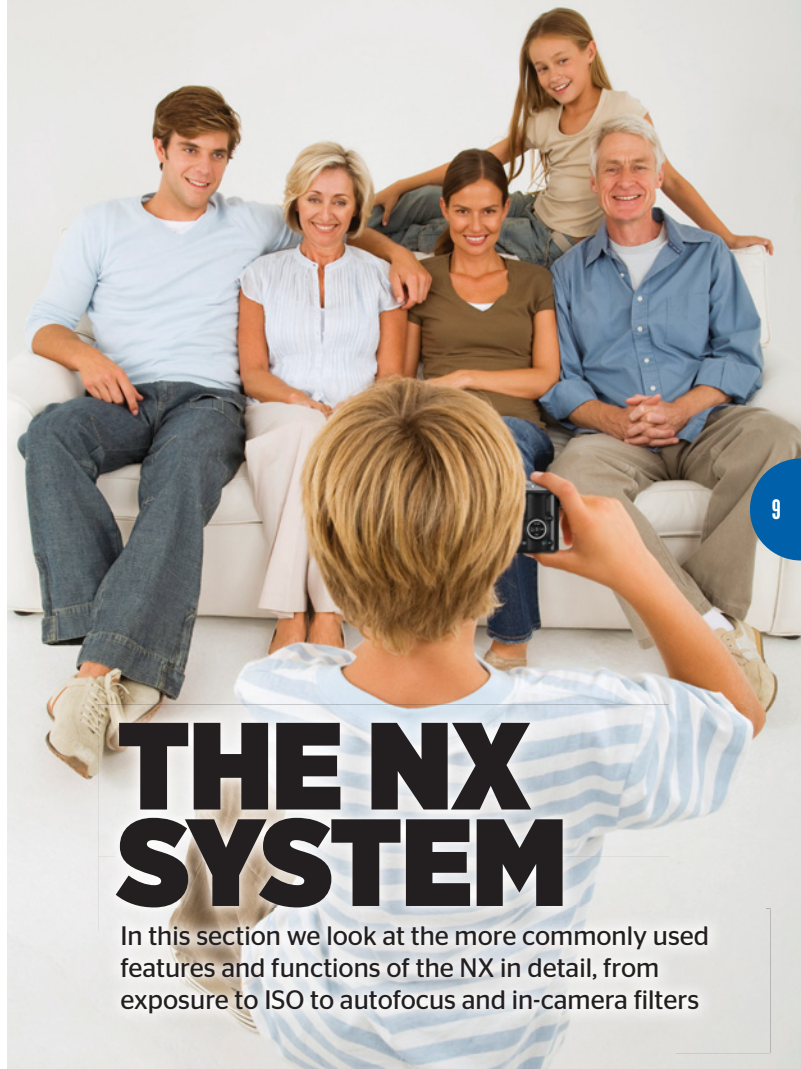
DON'T FORGET: SDHC CARDS



The Samsung NX range use SDHC cards to record pictures and movies on to. They come in a variety of capacities ranging from 2GB (Gigabytes) to 16GB.

Memory card size	4GB	8GB
Amount of photos	1000	2000
Amount of video	1 hour	2 hours

Figures are approximate



THE NX SYSTEM

In this section we look at the more commonly used features and functions of the NX in detail, from exposure to ISO to autofocus and in-camera filters

i-FUNCTION

Make fast changes to camera settings using Samsung's unique one-touch option on NX lenses

The i-Fn button is a revolutionary leap forward in camera functionality that enables fast, intuitive changes to be made on iFn-enabled lenses. Pressing the button on an iFn lens brings up the menu for fast, precise but easy to use alterations for shutter speed, aperture value, exposure value, ISO sensitivity and white balance. Selections are then made simply by turning the focusing ring on the front of the lens itself - values are shown on the display or in the electronic viewfinder (EVF). This means that rapid adjustments can be made with your eye to the EVF without you needing to go through the camera's menu. You can more easily react to situations in front of you and then never miss that once-in-a-lifetime picture.



In the mode the NX will recognise the lens you have attached and optimise the camera's settings for the type of typical shooting you may do with this lens.



Tip: making these key functions more easily accessible encourages NX owners to explore the creative possibilities of their camera.

DON'T FORGET: HOW TO USE iFn



Press the iFn button to bring up the menu, press it to scroll through the options. When you get to the setting you need, rotate the focusing ring.

APERTURE

Learn how to control what details appear sharp in the background of your pictures using your aperture

The aperture (known by photographers as an 'f-stop') is used to control the amount of depth-of-field, or what appears in sharp detail from the front to the back of an image. A small number (or wide aperture) of, say, $f/3.5$ gives what's called a shallow depth-of-field and is generally used for portraits to make a distracting background go blurry and your subject more prominent in the picture. As the aperture number increases, the depth-of-field increases too. Landscape photographers like to use small apertures of around $f/16$ or $f/22$ so everything from the foreground all the way to the background appears in sharp detail, also known as a deep depth-of-field. So, in essence, your aperture is used to control what in the background looks detailed.

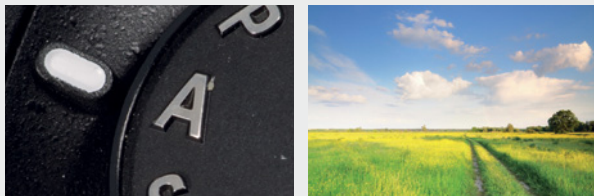


Use the Scene mode to automatically optimise the NX's settings for the type of picture you are taking.

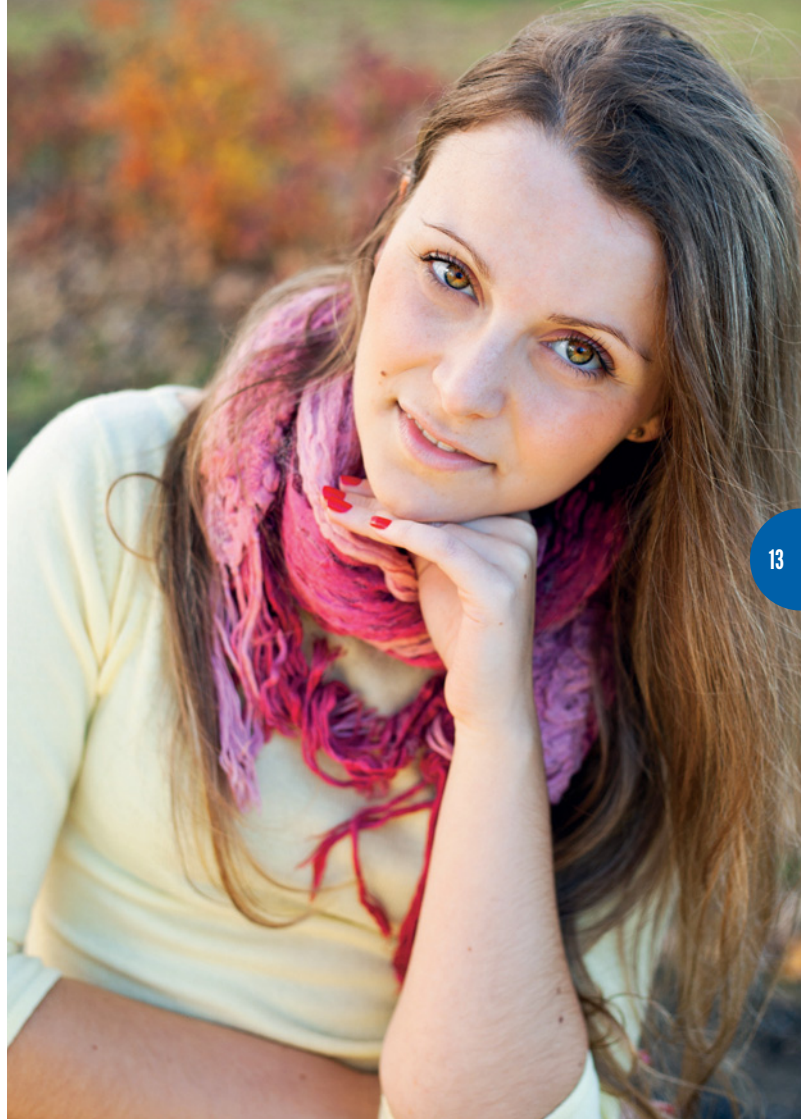


To see the effect of an aperture on a picture or subject, shoot one with an open aperture and another with a closed aperture and compare

DON'T FORGET: APERTURE-PRIORITY MODE



By turning the main control dial to 'A' you can set the aperture yourself but the NX will automatically control your shutter speed for you.



SHUTTER

Learn how to freeze action subjects by using the camera's shutter speed

The amount of light that enters the camera is controlled by the shutter speed. The brighter the conditions, the faster the shutter speed will be - or can be. Another way to think of it is the brighter the conditions, the shorter the amount of time the shutter needs to be open to expose the scene properly. Low light scenes will require the shutter to be open for longer to allow more light onto the sensor to expose the image correctly. But the shutter speed can also be used to freeze movement too. Fast-moving action subjects need a fast shutter speed, for example 1/500 second - but you can only use these shutter speeds if your scene is bright enough. Both the shutter and aperture are affected by the ISO speed (see pages 16-17), the measure for how sensitive the camera is to light.



Turn the main control dial to 'S' and select a big number, say 1/500sec, for when shooting fast-moving action subjects



In low light, if your images look blurred increase the ISO so the shutter speed used is equal to or greater than the focal length of the lens.

DON'T FORGET: OPTICAL IMAGE STABILIZER



This clever device enables you to shoot in low light and still get sharp, shake-free images using longer shutter speeds.



ISO

The NX's sensitivity to light can be altered to suit the conditions or left in auto for peace of mind

The ISO is a way of altering the camera's sensitivity to light. The lower the number, the less sensitive the camera's image sensor is and the longer the shutter speed needed to form a correctly exposed image. The higher the number, the greater the sensitivity and the shorter the shutter speed needed to expose an image correctly. In the past, as the ISO number increases, image quality decreases and 'distortion' appears as something called image 'noise' - an increase in coloured dots or 'grain' in the image mainly seen in shadow areas. However, sophisticated software within all NX cameras removes this 'grain', so now at even high ISO levels in low light situations, your images will have smooth tones, bright colours and virtually no grain.



It can be fun to get creative and shoot high ISO images even in brighter conditions for effect, leaving the Noise Reduction option off to deliberately add grain.



If you'd prefer not to up the ISO, you could turn on the flash instead and use it as your main light source to illuminate your subject.

DON'T FORGET: AUTO ISO



Auto ISO mode will set the ideal ISO automatically so you can always get shake- and blur-free images.

AUTOFOCUS

From static portraits to the fastest action, there is a focusing mode that's perfect for every situation

The NX series has four different types of focus mode for different shooting situations. Single AF mode is ideal for static subjects, such as a portrait or landscape. There is also a Continuous AF mode that, once locked on, tracks the subject as it moves around and is ideal for action subjects such as kids in a playground or cycling. Third is a Self-Portrait AF for turning the camera on yourself. And last is a Manual mode where you can focus the lens yourself, for example, a night scene or for a subject that's the same colour or tone as its background. In Manual mode the scene is magnified in the display to help with focus accuracy.



Selecting AF Priority mode only lets the camera take a picture if it has correctly focused on something.

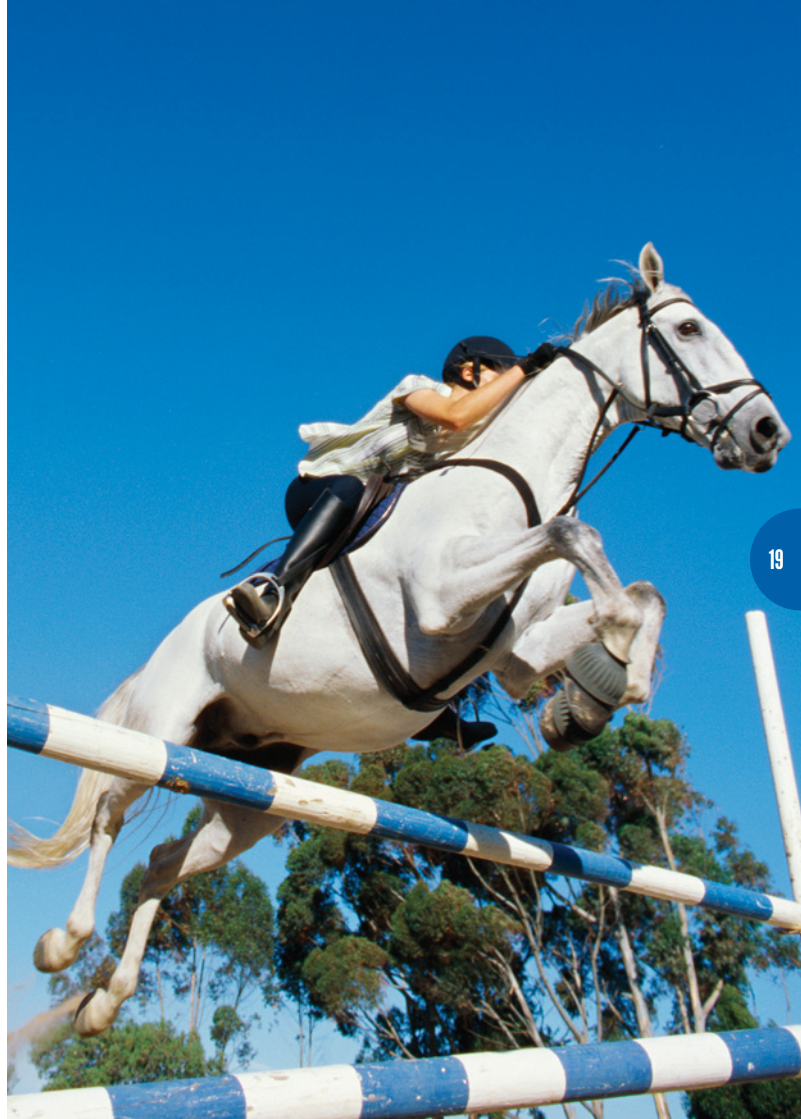


Always try and focus on a part of the image that has some texture, lines or shapes to help the focusing be more accurate.

DON'T FORGET: FOUR FOCUSING OPTIONS



In any shooting mode press the 'Fn' button and scroll to AF area; you can select from one of four different autofocus (AF) modes.



EXPOSURE

With the Samsung NX cameras, you have an array of automatic modes or you can take complete control

These days, thankfully, cameras are so much more sophisticated and can recognise a scene and calculate the correct exposure accordingly. This means that you can largely forget about your images being too dark (underexposed) or too light (overexposed). With the NX series of cameras, you have the option to let the camera take control and shoot perfectly exposed images with Multi-area metering, which measures light from all over the frame and calculates the right setting automatically. For tricky lighting conditions, such as on a sunny beach or shooting into the light, there are various Scene modes that have been fine tuned for their respective shooting scenarios.



Use the Smart Range option when you have bright highlights and dark shadow areas in one picture, such as a sunny landscape or a wedding portrait.



If you are struggling to know what to do, simply place the mode dial in Program mode or Smart mode - both are perfect for beginners.

DON'T FORGET: CHECK YOUR IMAGE



The EVF and display show you exactly what your final image will look like. If you think it looks wrong, change the settings and re-shoot.



COLOUR

To ensure accurate colour, you need to set the right white balance for the lighting conditions... or use auto

The everyday light sources we encounter emit a colour cast to their light. For example, fluorescent lights turn the scene green and household lightbulbs turn everything orange. Our brains are very clever at removing this colour cast to make the light look as neutral as possible. Digital cameras are equally clever; in the Auto white balance (AWB) mode the camera recognises the prevailing lighting conditions and corrects things accordingly. Sometimes, though, it's nice to take a little more control and explore your camera's abilities. The NX series has nine settings for white balance, including full auto, and you can see the effect each has by scrolling through on the rear display.

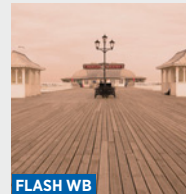


If you want to quickly change the ISO setting, repeatedly press the 'iFn' on the lens and scroll through to the ISO option, using the focus ring to make changes.

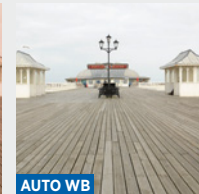


If you shoot in the Raw image quality setting, you can change the white balance on your computer to a new one, or correct a mistake.

DON'T FORGET: CREATIVE WHITE BALANCE



FLASH WB



AUTO WB



TUNGSTEN WB

For creative effect you can manually select the 'wrong' white balance to add a fun and interesting colour cast to your image.



FLASH

The built-in and accessory flash units do a whole lot more than just illuminate dark subjects...

Use the automatic in-built flash or an accessory flash to shoot in low light conditions, to add fill-in light and soften shadows in bright sunshine, and to add an attractive catchlight into people's eyes to make them sparkle. You can also use flash to 'freeze' a moving subject and to increase colour saturation in an image, for example, shooting a portrait that is backlit by sunshine. In the automatic modes the camera sets the flash for you, but you do have some creative options too. For example, increasing the flash power for more distant or darker subjects, 2nd Curtain for low light movement and high-speed flash.



Red-eye prevents people in your portraits getting the red-eyed effect. It fires a burst of light to close their pupils and then takes the picture.



Get too close and your flash will overpower a subject and bleach it out and the lens will cast a shadow too.

DON'T FORGET: 2ND CURTAIN FLASH



For moving subjects in low light use the 2nd Curtain option as the flash fires at the end of the exposure and 'freezes' any movement.



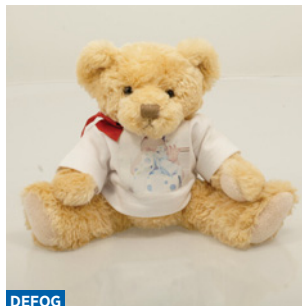
FILTERS: 1

In-camera **Smart Filters** are great fun to play with and add an extra dimension to your photos

You can apply effects, or Smart Filters, to your images after you have taken them when in the Playback mode. Each one of these effects is processed in camera and the NX creates a new image, keeping the original intact, placing it at the end of all the other images. You can apply Smart Filters as many times as you like, even running the newly created file through a second, third or fourth additional Smart Filter. The point is to just have fun and experiment.



ORIGINAL IMAGE



DEFOG

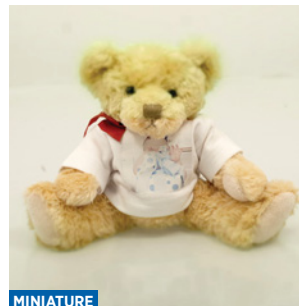


FISH-EYE



HALFTONE DOTS

HOW TO FIND THEM:
Press the Playback button [1] and then the 'Fn' [2], scrolling through to Smart Filters [3]. The effect is shown on the display. Press 'OK' and a new file is created.



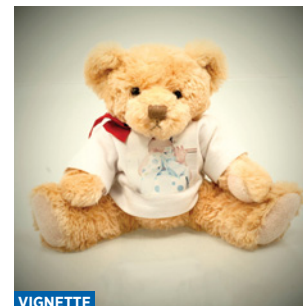
MINIATURE



SKETCH



SOFTFOCUS



VIGNETTE

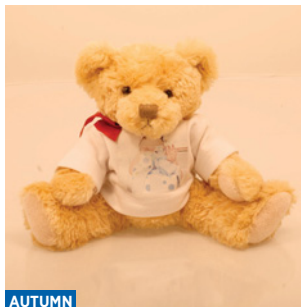
FILTERS: 2

Create coloured effects to your images after taking them using the **Photo Style Selector**

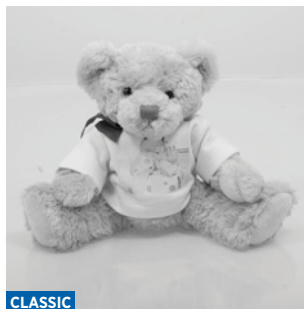
These effects are not too dissimilar to the Picture Wizard shooting options, though the Photo Style Selector filters are applied to images after taking them, processing them on the display. Again, the original file is kept intact and you can apply each filter repeatedly to the same file or in a sequence, or combine them. Some are more suited to certain types of scene so they enhance the colours, for example, enhancing autumn colours with the Autumn Style option.



ORIGINAL IMAGE



AUTUMN



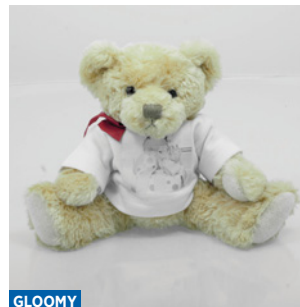
CLASSIC



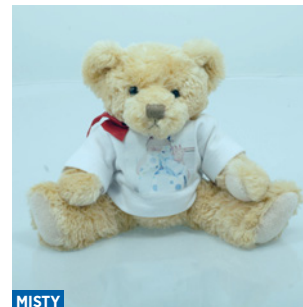
FOREST

HOW TO FIND THEM:

Press the Playback button [1] and then the 'Fn' [2], scrolling through to Photo Style Selector [3]. The effect is shown on the display. Press 'OK' and a new file is created.



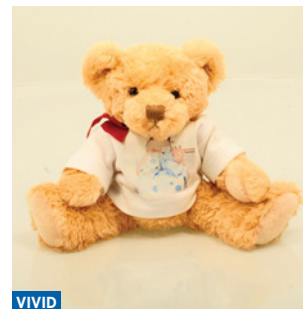
GLOOMY



MISTY



SOFT



VIVID

JARGON BUSTER

Technical and photography terms explained..

EVF (ELECTRONIC VIEWFINDER)

This is an optional accessory for some NX models that attaches to the Smart Shoe giving you the choice to compose on the display or the EVF. You'd use this when you can't see the display clearly in very bright sunshine or to save on battery power.

IMAGE SENSOR This is the part of the camera that turns light into an image. The sensor sits behind the lens and is a grid of tiny photocells, 14.6 million to be precise. The image sensor in NX cameras is the same size as in most digital SLR cameras so produces excellent quality images.

COLOUR CAST Every light source we encounter, whether natural or man made, emits a coloured hue that the human brain, and the NX's auto white balance function, automatically counterbalances. These casts are managed and corrected via the white balance function (see page 22) on digital cameras.

NOISE/GRAIN As the ISO number increases, from 100 to 6400, image quality decreases and 'distortion' appears in the picture as something called image 'noise' - an increase in coloured dots or what looks like 'grain' into the image that can mainly be seen in shadow areas. It can be used for creative effect or removed by the camera with High ISO Noise Reduction software that's built-in, found via the Menu.

CAMERA SHAKE AND OIS In low light shooting situations it is possible to get blurry images from something called camera shake. It's caused when the shutter stays open longer to allow enough light in to expose the image correctly. To help prevent this, NX cameras have something called an Optical Image Stabilizer (OIS), an automatic feature built into the lenses to help counteract tiny movements when handholding.



FAMILY & FRIENDS

Read our simple-to-follow and jargon-free guide to taking memorable and fun pictures of those close to you with your Samsung NX camera system

BABIES

Capture those first few precious moments of your newborn's gurgles, smiles and toe-grabbing

All too quickly babies turn into toddlers and before you know it they'll be off to school, so as parents it's so important to capture those first precious months. And not just pretty portraits with fluffy hair and sparkling eyes, but all the little things that we may forget. Close-ups of hands and feet, ears, noses and lips, favourite toys or comforters, even everyday items that will one day bring wonderful memories flooding back. Mundane items such as hairbrushes, romper suits and toiletries, when shot creatively, can make great little memory snaps. You could switch to Movie mode and with one touch you can shoot richly detailed HD movies of toe-grabbing, gurgling and their first smile.



Why not try the Beauty Shot Scene mode that automatically softens skin tones to help remove those little imperfections babies sometimes have.



Whenever possible try and get down to your baby's eye-level, even laying on the floor to take your images.

DON'T FORGET: SOUND PICTURES



To add that extra dimension, the latest NX cameras can even record Sound Pictures for an even more evocative memory keepsake.

CHILDREN

Children never stop moving but this is why they make such fun and interesting subjects to photograph

It's always best to get your children absorbed in an activity and then start snapping away as the images appear more natural and are easier to shoot. From playing with their toys in the garden, while on a climbing frame at the local park, to being in their own little world in their bedroom simply colouring or playing with dolls. If you want to go down the posed route, make the pictures fun and interesting: take them into the garden and ask them to make ten funny faces and shoot a sequence, splash in puddles in the rain, go for a leaf stomp in autumn or dress them up in their favourite costume and have a photographic adventure!



In the Drive mode, select the Continuous option to take multiple, fast-sequence images of your children in action.

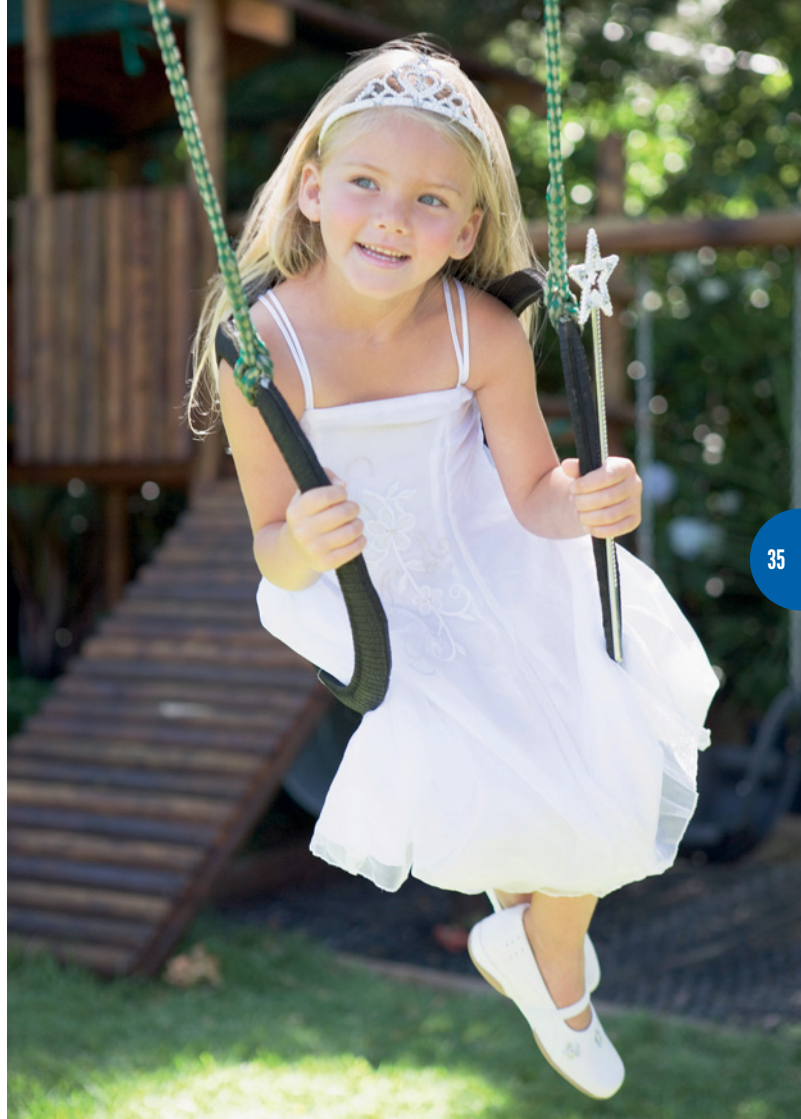


The NX series of cameras have an automatic Children Scene mode that sets the camera up so you can concentrate on capturing the moment.

DON'T FORGET: A TELEPHOTO ZOOM



A longer focal length will allow you to sit back and capture more natural behaviour as children play and explore.



GROUPS

The secret to great family shots is to try and capture everyone interacting together

Trying to be a bit more creative with your group shots can yield more pleasing results. Getting the group to interact in some way, even taking them to a location that makes that interaction possible, say a woodland, park or garden, adds an extra dimension – and they don't all have to be looking at the camera. Keep your composition tight around your group to avoid distracting backgrounds and why not ask them to wear clothes that will add a splash of colour. When posing, don't just line them up, get your subjects at different levels and heights – perhaps use a tree or fence if outdoors, or the back of a sofa or the stairs if at home.



To shoot a wide group of people in the Panoramic mode half press the shutter and slowly sweep the camera horizontally across the group.



Use the NX's Face Detection mode to perfectly focus and expose up to ten faces in your picture.

DON'T FORGET: ADD A LITTLE FLASH



If there is contrasty light on faces use the Flash to even out the shadows and highlights, and give eyes a pleasing sparkle.



PARTIES

Capture your friends and family enjoying themselves and some funny memories to boot

From Uncle Bob doing his moves on the dance floor to kiddies bouncy castle action, these wonderful moments are all the more special when caught candidly. What you need is a small and light camera that can react at a moment's notice to events as they happen. Lightning fast autofocus, a lens that can go from wide to capture a group or zoom in to isolate your subject from the crowd are all important. And if your party turns into an all-nighter, the NX's combination of high ISO sensitivity and Optical Image Stabilization (OIS) technology help capture all that colour and atmosphere in sharp detail without blur and shake spoiling your pictures.



Self-Portrait AF mode is great for when you want to turn the camera on you and your friends having a great time.



If your camera is struggling to focus in dark conditions, turn on the AF Lamp in the menu. This shines a bright light to aid focusing in the dark.

DON'T FORGET: AUTO + RED-EYE



To prevent red-eye, select this from the Flash menu and then snap away; do not move the camera until the end of the second flash.

WEDDINGS

Let the camera do all the hard work for you so you can relax and grab memories that make it special

From walking up and down the aisle in a dimly lit church to sunny shots of the bride and groom posing after the ceremony, you need to take a flexible approach at weddings. But you also need to keep your eyes peeled for those special moments that only those attending the wedding see: granny wiping tears of joy from her eyes, the pageboy pulling funny faces and those tender moments between family and friends that help make the day so special. With so much going on, you'll want the camera to do all the hard work for you. Smart Auto mode is perfect for such occasions as it's set up for those quick snapshot moments - though you may want to consider a longer lens, such as the Samsung NX 50-200mm zoom for that little extra reach.



With a dark suit and a bright white dress you may lose detail in the wedding dress on bright contrasty days so use Smart Range option to correct the contrast.



You can add a nice soft focus effect to an already captured image by going to the Smart Filter option in playback.

DON'T FORGET: MOVIE MODE



To avoid missing even one second of the special day, use the Movie mode to capture unforgettable high-definition clips.

SPORTS DAY

Record great shots of your budding Olympians as they run, jump and throw their way to victory

More often than not, school sports days end up being organised chaos, but they are just so much fun and very rewarding to photograph. Their unpredictability means you need to be ready to capture anything from the egg and spoon race to a full on sprint at a moment's notice. In the Sports Scene mode, the NX sorts all the technical bits and bobs so all you have to do is zoom your lens and click the shutter. For running races, rather than shoot from the side as the competitors pass, try moving to just beyond the finish line. This means a less cluttered background to your picture, plus you can photograph your child running the whole length of the race.



Burst mode fires up to 30 frames in a single second, so every detail, from a facial expression to a 'floating' ball or beanbag can be caught on camera.



On overcast days turn on the Auto ISO option - via the iFn button on the lens - so you can shoot without the need for flash.

DON'T FORGET: A TELEPHOTO LENS



A long telephoto lens will allow you to fill the frame with just your child as they run, or to frame-up candid moments in close.



AT HOME

Shoot lifestyle pictures of friends and family in the comfort of their own home in natural light

Pictures showing friends and family in natural settings have become very fashionable, particularly as many are shot in the comfort of a person's home and take on a relaxed and more natural feel. Cloudy, bright daylight (not bright sunshine - too much contrast) from large picture windows, French doors or conservatories give a softer feel to the images. Shooting this style couldn't be simpler: in the NX's dedicated Portrait Scene mode all you need to do is find a comfortable, relaxed pose, perhaps even use a prop such as a cup, newspaper or a pet, and start shooting, always using the eyes as the point of focus.



For lovely black & white images, select the Classic Picture Wizard mode.



To even up the light falling across a face ask someone to hold a bright white towel on the opposite side of the face to reflect some light back.

DON'T FORGET: 20MM OR 30MM F/2 'PANCAKE' LENSES

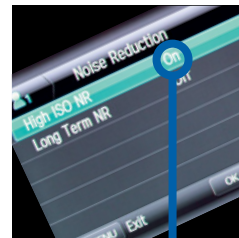


The 20 & 30mm are perfect for portraits due to their stunning optical performance and soft, defocused backgrounds at the f/2 aperture.

NIGHTTIME

Capture atmospheric memories of people and places after sunset with or without flash

Taking pictures at night can really show the atmosphere of a place or location, and also make great memory snaps to show friends and family back home, from a modern city scene with hundreds of bright lights to an after-hours BBQ at a friend's place, your flash or high ISO ability will come to the fore. Using a wide-angle, include some of the background in the shot to give a sense of place and scale. The dedicated Night mode will allow you to just point and shoot and sort the flash settings. Alternatively, switch your ISO to 3200 to make the camera more sensitive to light and avoid using flash altogether and use more of the ambient light.



High ISO Noise Reduction automatically removes any image 'grain' that can appear at high ISO settings and therefore improve image quality.



If the background of your night shot goes dark and loses detail, in the Scene mode use the Backlight option.

DON'T FORGET: 2ND CURTAIN FLASH



Instead of firing a burst of flash at the beginning of the exposure, the flash fires at the end to ensure people appear sharp and in focus.



YOUR PET

Photograph your favourite four-legged friends, capturing their characters and having fun at the same time

From soft and fluffy fur and bright, colourful feathers to hard and shiny scales, we all love our pets, and they can make superb studies with your camera. Every pet has its own character so it's this we want to try and bring across in your pictures. In some cases, such as dogs, cats and horses, a tight head portrait is a great record shot, but why not try capturing movement, say a cat leaping from its favourite spot, freezing it in mid-air using the Sport Scene mode. You could head off to the local park or beach and capture your waggy-tailed friend enjoying playing catch or splashing in the water. For smaller pets, use the Macro mode to get in real close, or place them on the floor and get down low with them.

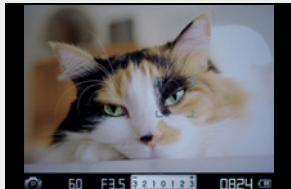


Continuous AF mode in conjunction with Multi-area AF is perfect for action shots of your pet moving about or playing.

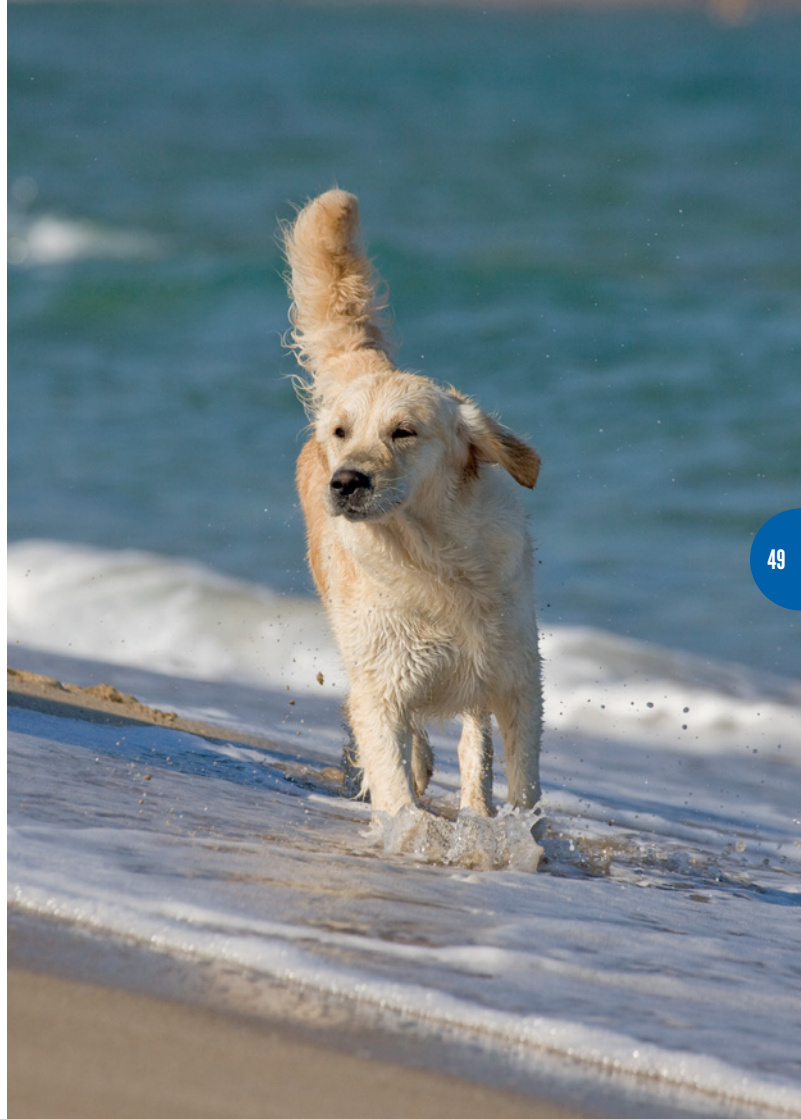


Smaller pets often move so quickly it may be best to combine pet and owner in a nice portrait asking them to gently hold it still.

DON'T FORGET: FOCUS ON THE EYES



As with pictures of people always ensure that you use your pet's eyes as the point of focus in the picture.



JARGON BUSTER

Technical and photography terms explained..

PICTURE WIZARD There are nine different preset Photo Styles that you can apply to your pictures to create a look or atmosphere, though each one is also customisable.

SCENE MODES 13 preset automatic modes that optimise camera settings for common shooting situations, from Children to Fireworks to Text, for example.

FACE DETECTION The camera recognises that there are faces (up to ten) in the frame and ensures they are correctly focused on and exposed when you press the shutter button halfway down.

MULTI-AREA AUTOFOCUS The camera automatically selects the best part of the scene to focus on.

OIS Optical Image Stabilization helps prevent camera shake and blur when shooting in low light, shadowy or dark places. There are two modes: Active for when pressing the shutter halfway or Always On.

APERTURE The aperture is used to control what in the image appears in sharp focus – also known as depth-of-field (DOF). A small aperture, say f/22, makes things from the front to the back of the picture appear sharp

and detailed – so has a deep DOF – but needs bright conditions. A big aperture, or wide aperture, allows in more light but creates a shallow DOF, so backgrounds look soft and blurry. Landscapes need a deep DOF and portraits need a shallow DOF.

KIT LENS The standard zoom lens that comes boxed with your NX camera.

PRIME LENS Lens that has a single focal length, such as a 20mm 'Pancake' or a 30mm 'Pancake'.



HOLIDAYS & TRAVEL

Over the next few pages we show you how to get the most from your NX while exploring the world around us. This is holiday photography for the beginner

IN THE TOWN

Take memorable pictures of new places you are exploring with your camera and lenses

What better place to see another culture than a town with all its sights, sounds and smells. There is so much to aim the camera at, from candid portraits to ancient architecture, transportation, food stalls, advertising signs – in other words, life. Look for anything that is different but remember to give it a sense of place and scale but beware of clutter in your picture. A longer lens will enable you to shoot subjects unaware for more natural behaviour or to bring distant objects or details closer. If it's a big scene you can't capture in one shot, take multiple images for a picture montage you can create at home on your PC. Lastly, make sure you look in all directions for picture potential, from under your feet to above your head, even shooting from a high vantage down on the town.



Smart mode means that the NX is ready for anything and will recognise a scene in front of it and set the most appropriate camera settings.



Wide-angle lenses close in to tall buildings turn them a triangular shape. To reduce this, step back a few meters and zoom in a little.

DON'T FORGET: SMART FILTERS



Smart Filters enable you to automatically apply a particular filter to an already captured image – for example create a 'Miniature' effect.

THE BEACH

Photograph special moments of the whole family having fun in the sun while on holiday

Beaches are places of relaxation, fun and colour. They can also be places of harsh light and deep shadows, open space and a challenge for photography. Things to look for include the obvious portraits of kids making sandcastles and licking drippy ice creams. However, close-ups and abstracts of details and colour are also worthy of a look; deckchairs can be fun, as can reflections in sunglasses. Look for interesting footprints - or make your own - and don't forget those shadows for fun abstracts. Try and avoid midday as the light is very harsh, but you could create shade with a parasol. Another trick is to use your sunglasses in front of your camera lens to help reduce contrast.



The Beach & Snow Scene mode counteracts the effects of very bright sunlight reflecting off of the sand that would normally underexpose your pictures.



Add a Samsung circular polarising filter to the front of your lens to increase colour saturation and remove reflections from shiny surfaces.

DON'T FORGET: TO ADD FLASH



It may seem bonkers to suggest flash on a bright sunny day, but flash helps add light into harsh shadows and increase colour saturation.



ON SAFARI

Ensure you come back from your once-in-a-lifetime trip with images you can hang on your walls at home

Though the 'big five' you hope to photograph when on safari are generally large, slow-moving animals, the distances involved can be incredible. So when a once-in-a-lifetime photographic opportunity arises in front of you, say lions on a hunt or baby elephants playing, you want to be able to ensure you get superb photos. Long zoom lenses are a must to fill the frame with distant wildlife; an accurate autofocus system that can track moving subjects is really handy too, plus having a fast picture capture rate that enables multiple shots to be taken. As it's likely to be very bright, ensure you attach your lenshood to avoid light flare spoiling your pictures.



Ensure you switch on the Continuous AF for when trying to capture moving subjects and keep them sharp.

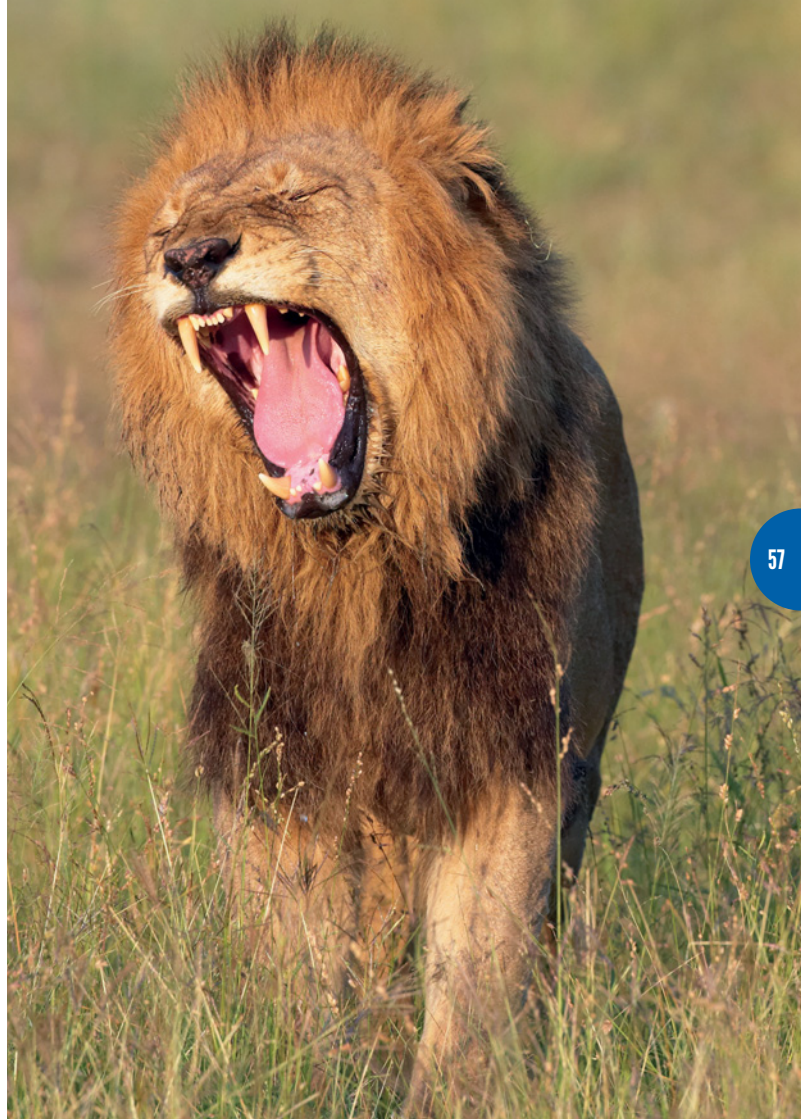


Did you know that the Face Detection mode will work equally well on animals as well as humans?

DON'T FORGET: A LONG TELEPHOTO LENS



Using the Samsung NX 50-200mm will help bring distant subjects closer or zoom in to capture details such as fur patterns, paws or faces.



ICE & SNOW

Capture all of the drama and action while out enjoying yourself on the white stuff

Skiing is an exhilarating, fast-moving sport for all the family with anything from action shots to portraits to be captured on camera. The lighting can be very dramatic and the colours bright and punchy too, which can fool a camera into underexposing. But don't worry the NX series have an automatic Beach & Snow Scene mode for just such conditions. For the fast stuff, select the Sport Scene mode and use a longer zoom lens to get close to the action and fill the frame. And don't just look on the ground for images, look for skiers doing arial tricks and even the odd wipe out - these look superb in the 30 frames a second Burst mode.



Use the Sports Scene mode to capture fast-action sequences on the slopes.



Cold weather can have dramatic effects on batteries so always take a spare and keep it warm inside your coat.

DON'T FORGET: USE FILL-IN FLASH



Fill-in Flash will get rid of the harsh shadows that bright sunlight can produce; all you need to do is find an interesting background.

NIGHT LIFE

When the sun goes down and lights come on you don't have to put your camera away...

As the sun dips below the horizon, many destinations come alive as night sets in. Lights twinkle on and you get to see a very different side. So whether you are out for supper, shopping or sightseeing, make sure you take your NX. Look for interesting neon signs, street scenes, reflections in puddles or rivers, silhouettes of people in shop windows, street entertainers, multi-coloured cityscapes and brightly lit architecture. Don't forget the small stuff too; these details make memorable snaps of things easily forgotten: dinner tables and food, hotel rooms, road signs and coffee cups or cocktails in a bar.



Night and Backlight Scene modes are ideal for all situations at night and in low light, from cityscape vistas to flash-lit portraits at famous attractions.



What about a bustling city scene taken from your open hotel window or balcony using the Sound Picture mode, great for ambience.

DON'T FORGET: GET DOWN LOW



A low angle on a wide-angle lens is a great way to include tall buildings in your scene, plus it makes for a more interesting composition too.

MARKETS

Take your camera with you to record the hustle and bustle of local life, where better to go...

Market places are the cross-roads of life and are ideal for photo expeditions. From candid shots of smiling stallholders, locals and tourists using a longer focal length, to close-ups of exotic foods, colourful fruit and the repeating patterns of clothing with your wide-angle lens. It's also a chance for interactions with locals that can make great little movie memories. Markets can also look superb if taken from a high vantage point looking down to capture the whole scene, juxtapositioning the hurly-burly of activity against the calm of the surrounding buildings - particularly if a night market.

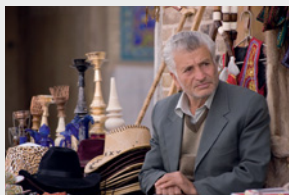


The Self-Portrait AF mode and a wide-angle lens means you can turn the camera on yourself for some fun market pictures with you in the scene.



If you are taking pictures of people make sure you always smile and say "thank you" if you get spotted.

DON'T FORGET: USE AUTO ISO MODE



A flash going off may alert people to you taking pictures and spoil the moment. Instead turn on Auto ISO to prevent the flash going off.



FUNFAIRS

Capture the laughter, cuddly toys and candyfloss – and come back home with memory cards full of smiles...

From kids on carousels, to candyfloss and clowns, fairs are fun, colourful and photographically rewarding. The Children Scene mode is ideal for all things kids, but you may want to shoot abstracts of colourful slides with a telephoto lens, Fill-in flash portraits at the stalls or use the Night mode – while supporting your camera – for long exposure light trails as the sun heads south. To make even more of the colours, select the Vivid Picture Wizard mode and increase the saturation. And there is nothing like a HD movie of the family getting a soaking on the log flume or racing go-karts – you may need to add your telephoto zoom lens.

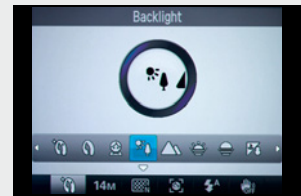


The Vivid Picture Wizard mode can be used to boost the bright colours of a funfair even brighter.



If your images are coming out too dark, turn on the flash to give you extra light and freeze the action.

DON'T FORGET: GET ON THE RIDE



Nothing beats shooting images from the perspective of your subject; you may well need the Backlight Scene mode when undercover.

JARGON BUSTER

Technical and photography terms explained..

I-FUNCTION Press the i-Fn button on an i-Function lens for quick access to commonly used settings for the mode you are in, making selections via the focusing ring. You can view via the rear display or the electronic viewfinder (EVF).

MULTI-AREA AF The NX automatically selects the best place to focus on in the scene with green boxes in the rear display or EVF to show where focus is set.

SHUTTER-PRIORITY MODE This is a creative automatic mode that is used when you want more control over action subjects. Use a high shutter speed, such as 1/500sec, to capture moving subjects or a slower shutter speed, say 1/30sec, to induce movement blur and give a sense of speed. The rest of the settings are automatic.

LIGHT TRAILS Using a slow shutter speed and placing the camera on a solid surface or a tripod, you can create trails or lines of light that look very atmospheric and dramatic.

SOUND PICTURE MODE After you've taken a normal still image, a seven second sound clip is recorded alongside as a form of voice memo or ambience recording.

SELF-PORTRAIT AF Turning the camera around to shoot a self-portrait makes it tricky to check accurate focus. This focusing mode is automatically set for close-up (arm's length) and when in focus you hear fast beeps and can take a picture.

UNDEREXPOSURE Camera meters work by measuring reflected light. With snow and beach scenes, both reflect more light than normal so the camera thinks it needs to reduce the exposure time and therefore underexposes the scene, making it look too dark. This mode takes this into account and corrects exposures accordingly.

TELEPHOTO ZOOM Your standard kit lens that comes with the NX will be a wide-angle, say from 20-50mm or from 18-55mm. A telephoto zoom lens has a greater magnification, say from 50-200mm, and can zoom in and fill the picture with objects at a distance.



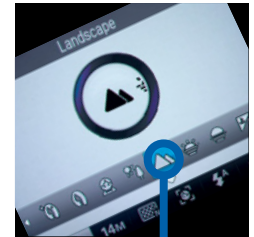
SCENICS & NATURE

From landscapes, to beach details and a walk in the park, read our relaxed and easy-going guide to shooting the flora & fauna around us with your NX

WALKING

Heading out into the hills and dales keeps us healthy and refreshed, just remember to take your NX...

We are a nation of walkers and ramblers, but then we have some beautiful countryside to wander in. But these landscapes can also be superb to capture in photographs too. Fortunately the NX series is small and light so doesn't add to the burden of weight. There are no secrets to pretty landscapes, just snap what you think looks great - reflections of houses and boats in water, fences leading to attractive elements in the landscape, meandering rivers across a scene. Think about putting things in the foreground of your picture to help tell more of the location's 'story'. And don't be afraid to use people in your pictures to give a sense of scale. Lastly, summer storms can look wonderful - in colour and black & white.



Let the camera sort things like apertures and colours so you can concentrate on getting your picture looking pretty.



In the menu go to User Display and select 3x3 from the Grid Line option. Press the DISP button to bring up a grid for straight horizons.

DON'T FORGET: LANDSCAPE PICTURE WIZARD



This colour mode optimises the camera so you get perfect, rich colours in your scenic images.

SUNSETS

There are few more richly coloured spectacles in nature than a sky catching fire at the end of the day

Sunsets create very dramatic light that isn't actually that common, which means you need to be ready for it at a moment's notice. Individually the sky itself makes an interesting picture. Far better, though, is to place something else in the frame to contrast against it: trees, buildings, a landscape or cityscape, or even a person. Your camera will automatically underexpose the foreground subject, as the sky is so much brighter, creating a startling silhouette that looks amazing. If you are silhouetting a person, by turning on the flash you'll create a startling portrait; the flash lights the person yet the camera captures all of the wonderful sky colours - the French call this technique *contra jour*.



Backlight Scene mode is perfect for shooting dramatic silhouettes of people, places or objects.

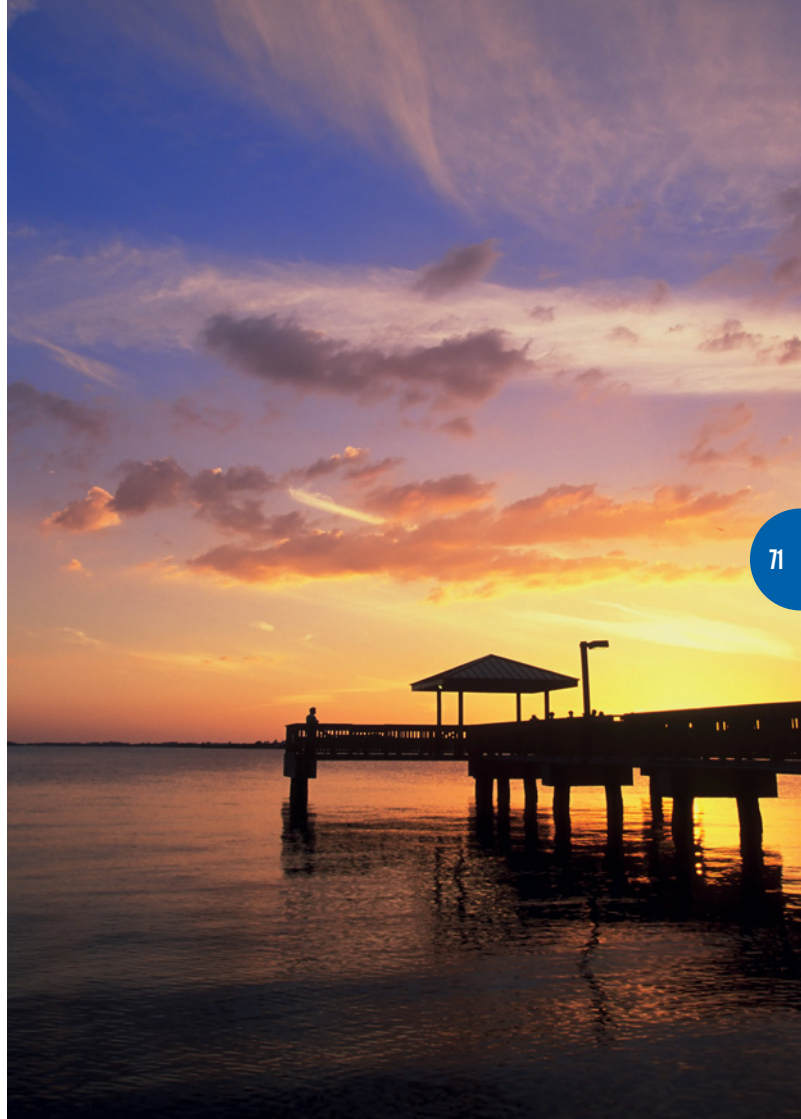


Make sure your lenses are clean and free of dust, particularly if shooting into the sun. Dust and fingermarks create light flair.

DON'T FORGET: VIVID PICTURE WIZARD



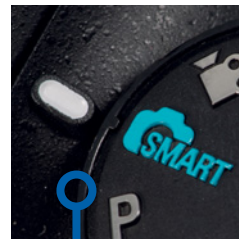
The Vivid Picture Wizard or Sunset Scene mode are perfect for increasing colour saturation in dramatic lighting situations.



THE PARK

From flowers and insects to adventure playgrounds, there is always something to snap at the park

There is such a variety of things to explore with your camera in a local park or garden – action shots of kids playing on climbing frames and adventure playgrounds, dads pretending to be Frank Lampard, reflections of ducks and swans gracefully gliding across ponds, ground-level portraits of squirrels being fed, using a telephoto lens, colourful flowers and insects in close. The key is to go prepared with your standard wide-angle lens and a long zoom as well. Use the NX's most appropriate Scene mode for what you're shooting, or slip it into Smart or Program mode and let the NX sort the techy bits.



Fiddling with camera settings may mean you miss a great shot, so use the Smart mode so the NX automatically picks the perfect settings.



If you are out on a dull day and want to add a little colour, in the white balance select the Cloudy option and add warm tones to your pictures.

DON'T FORGET: INTERESTING ANGLES

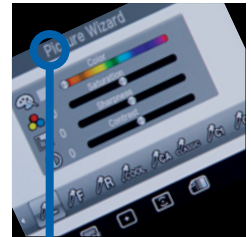


Try not to shoot all of your images from head height; with a wide-angle shoot up and down at kids having fun on jungle gyms.

THE BEACH

As places that are ever-changing, beaches make interesting detail and abstract studies with a camera

Beaches are great places to search out details and abstracts, such as water-worn wooden groynes, sea-washed pebbles and sun-faded paint on beach huts, and let's not forget the seals, birds and mini beasts in rockpools too. Look for shapes in rocks that may make patterns, reflections in pools and tiny flowers blowing in soft breezes. What's even better is that these are as interesting when photographed on overcast days when the light is softer, more even and colours slightly muted. With close objects, keep them parallel to the camera to get a deep depth-of-field, and watch you don't block too much light with your body.



Beach abstracts can look amazing when shot in black & white, or even increasing the contrast to make them more colourful. Look in the Picture Wizard menu.



Be very careful when swapping lenses on the beach as the wind can easily blow sand and dust into the camera's insides.

DON'T FORGET: A POLARISING FILTER



Polarising filters boost saturation and remove reflections from water and shiny surfaces, so are ideal for beach photography.

FLOWERS

Why not go on your own garden safari in search of delicate blooms and bright summer colour

There are few more beautiful subjects than flowers, whether they are from your own garden or elsewhere. From close in macro shots of fine details or abstracts, to an individual flower head cropped in tight, to wide-angle shots of great swathes of colourful flowers in a field all bobbing in a gentle breeze. Use interesting angles and shapes in the pictures, contrast colours together - even using the cobalt blue sky, getting down low and shooting up with your wide-angle lens. Lastly, you can even pop out on cloudy, overcast days as there is less contrast in pictures.

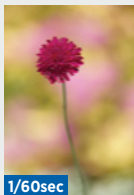
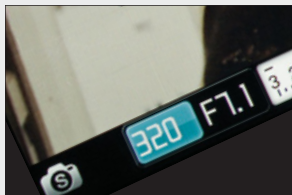


Use Portrait Scene mode and a telephoto lens at 200mm to distance a flower from its surroundings and turn backgrounds soft and blurry.

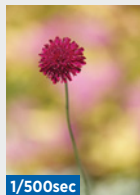


Treat the centre of the flower as the flower's 'eye', and use this as your focus point - unless you want something more abstract.

DON'T FORGET: THE WIND

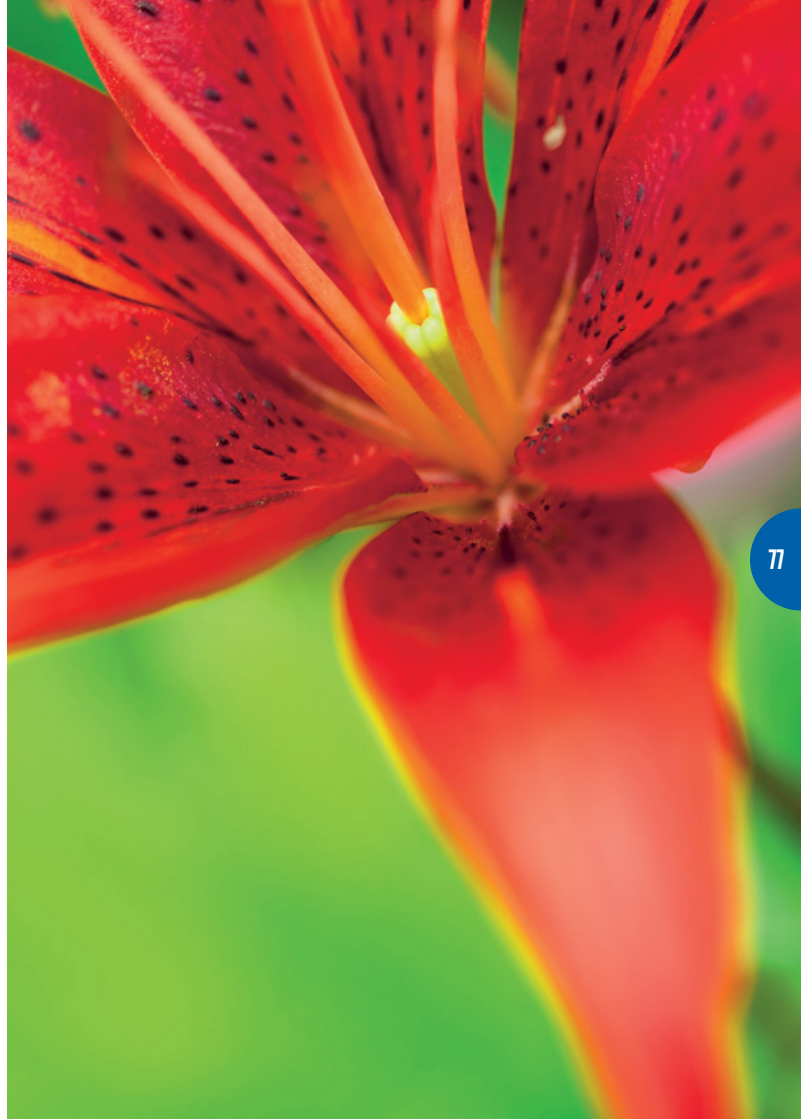


1/60sec



1/500sec

Flowers are affected by even the slightest breeze, so switch to 'S' (shutter-priority mode) and set a value of 1/320 or above.



THE WOODS

Woods and forests are magical places with something new around every corner to excite and inspire

From dappled sunlight down woodland tracks, backlit leaves against a bright sun, abstract patterns of leaves on the floor to close-ups of interesting bark and fungi, woods and forests are superb places to go exploring with your NX. You can head out on bright, sunny days for more vibrant colours or on grey, overcast days for softer tones, the choice is yours. Look for boardwalks snaking through trunks, small streams and babbling brooks that can take the eye on a journey through the scene. Remember to look all around for potential snaps, including pointing the camera up at the canopy using a wide-angle to capture trees reaching for the skies. You can use friends and family in your scenes to add scale and a spot of colour too. And let's not forget swathes of bluebells carpeting a woodland floor.



Woodlands and forests are superb places to try out shooting in black & white; use the Classic Picture Wizard option.



Why not make a collection of woodland artifacts that you can take home to shoot a still life image on another day.

DON'T FORGET: 16:9 IMAGE SHAPE



You can change the shape of the image from the standard 3:2 rectangle to 1:1 square or for woodland scenes the 16:9 panoramic.

PANORAMAS

A unique style of image that looks great for wild landscapes and cityscape vistas

There are times when your camera cannot capture enough of a scene, for example, a beautiful mountain vista or coastscape. You could shoot a few images and join them together on your computer. However, far simpler and easier is the Panoramic mode that at the twist of the NX's dial will automatically create a beautiful wide shot. Once in the mode all you need to do is focus, press the shutter button once and then slowly pan the camera in a gentle, steady motion across the scene - horizontally or vertically. You can do this by hand or use some form of support, such as a tripod, wall or a fence post.



There are two OIS modes: on when you press the shutter and always on.



Try and keep your movement slow, smooth and level or the camera will have trouble creating the panoramic.

DON'T FORGET: TURN THE CAMERA 90 DEGREES



To get a larger panoramic image turn the camera 90 degrees and then pan left to right. Just rotate the image on your computer afterwards.



JARGON BUSTER

Technical and photography terms explained...

IMAGE DESIGN (OR COMPOSITION)

Composition of an image is a very important part of taking pictures. You need to look for balance, not cutting off important parts of the subject, keeping things straight and using something called leading lines, features such as rivers, paths, roads and fences that start at the front of the picture and effectively lead the eye to the subject you are shooting.

GRID LINES AND RULE OF THIRDS

The NX can project a faint lined grid on the display to help you keep buildings straight and horizons level. It can also help with creative composition by placing key objects in the picture on one of the meeting points of these grid lines. Landscape photographers call this using the rule of thirds, referring to the image being divided up both horizontally and vertically into thirds.

SHUTTER-PRIORITY

The shutter speed is the amount of time that the shutter is held 'open' to allow light to pass through the aperture and onto the camera's sensor. Fast shutter speeds are used to 'freeze' fast movement – say a running horse or moving car. Shutter-priority mode allows you to set the shutter speed but everything else is automatic. A

good exercise to do is to photograph a children's windmill blowing in the wind with a fast and a slow shutter speed to see the effect each has.

WHITE BALANCE (WB) All light sources, both natural and artificial, give off some form of colour hue to the light they emit. Our brains remove these hues automatically, or certainly reduce them. A camera can do the same when in auto white balance (AWB). However, with the NX you can take more control and set the WB yourself or for a bit of fun you can set the 'wrong' white balance.

IMAGE RATIOS (SHAPE/SIZE)

The standard film rectangle shape is 4:3 (this ratio relates to the vertical and horizontal dimensions of the image). However, with the NX you can automatically alter the shape of the image you are taking to suit the subject and 'waste' less space in the image – there are two additional options. 16:9 is a widescreen format (like your TV) and good for landscapes. The 1:1, or square, is good for portraits (David Bailey loved the square image), close-ups and abstract images – but the choice is yours.

ACCESSORIES

From additional batteries and camera protection to flashguns, filters and a GPS, get more from your NX

GREAT FOR: CAMERA PROTECTION

PORTABLE BAGS CAMERA PROTECTION

These stylish yet functional bags are perfect for transporting and protecting your NX, lenses and accessories.



GREAT FOR: COLD WEATHER OR EXTENDED SHOOTING



LITHIUM-ION BATTERY NX POWER

We all know that batteries are affected by cold conditions. So it's always a good idea to pack a second or third. But additional power could also come in handy if you are on an extended shoot, for example, on a safari or when visiting a tourist hotspot.

GREAT FOR: USE PENTAX LENSES ON YOUR NX

K-MOUNT ADAPTER MANUAL LENS MOUNT

If you have some old Pentax K-Mount lenses, or have had a Samsung GX-series DSLR with lenses, this adapter will allow you to attach them to your NX, though there are no electronic connections or lenses inside, so can only be used manually.



GREAT FOR: LOW LIGHT & FILL-IN FLASH**SAMSUNG FLASHGUNS****ED-SEF15A/20A/42A**

Attaching to the camera's hotshoe, these automatic flashguns are more powerful than the built-in unit so offer a greater range and coverage. You can also tilt the head for bounced flash effects. The SEF42A is the most powerful, with a tilting and rotating head.

**GREAT FOR:** GEOTAGGING YOUR IMAGES**GPS MODULE**
GEOTAG YOUR IMAGES

This little battery-powered Global Positioning System (GPS) module sits in the NX's hotshoe and enables you to never forget where that amazing picture was taken. It automatically tags every photo taken by the location it was shot and categorises your images by the closest city.

**GREAT FOR:** BRIGHT SUNNY DAYS**ELECTRONIC VIEWFINDER** **EVF10/100F**

The EVF can be used as an addition to the rear display on entry NX models. It's particularly good when you have difficulty seeing an image on the display, need to save a little battery life or prefer looking through a viewfinder instead. All the information in the display is also viewed on the EVF.

**GREAT FOR:** SATURATING BLUE SKIES**SAMSUNG C-PL**
CIRCULAR POLARISING FILTER

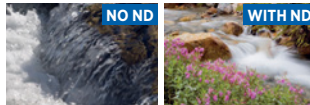
Boosts colour saturation and removes unwanted reflections while reducing haze and sunlight glare. Great for blue skies.

**GREAT FOR:** PROTECTING YOUR LENSES**SAMSUNG MC UV**
PROTECTOR
UV FILTER

Attach this clear filter to the front of your lens to protect it from knocks, dust & moisture. Constant cleaning can leave very fine scratches in glass, but replacing a protection filter is far cheaper than a whole new lens!

**GREAT FOR:** BLOCKING LIGHT**SAMSUNG ND-4**
NEUTRAL DENSITY FILTER

This filter blocks light, without adding a colour cast, to enable you to use slow shutter speeds in bright conditions. It's great for photographing water with.



LENSES

Get more from your Samsung NX and your picture taking with some alternative lenses

GREAT FOR: WIDE APERTURE PORTRAITS & LANDSCAPES



20mm Pancake f/2.8 NX iFN PRIME LENS

This is what's called a wide-angle fixed focal length, or prime lens. Wide-angle lenses are ideal for capturing expansive vistas, such as landscapes or cityscapes, or being creative with environmental portraits as you can include lots of the person's surroundings. In addition, its very wide aperture of f/2.8 is great for producing soft, blurred backgrounds.

SPECIFICATION:

Filter size: 43mm **Closest focus:** 17cm
Size: 62.2x24.5mm **Weight:** 89g



GREAT FOR: SPORTS & ACTION



50-200mm f/4.0-5.6 NX iFN TELEZOOM

There will be times when your kit lens doesn't have the 'reach' to capture your subject sufficiently, as they end up disappointingly small in the picture. So to fill the frame with distant objects, a telezoom lens is needed. Though optically powerful, this is a compact, lightweight lens that removes the type of restriction some shooting situations present, for example, filling the frame with your child's face at the school play or capturing that all-important sporting event from the sidelines. It also has OIS built in to keep things sharp when hand-holding in low light.

SPECIFICATION:

Filter size: 52mm **Closest focus:** 98cm
Size: 70x100.5mm **Weight:** 417g



GREAT FOR: ALL-ROUND

18-55mm II

f/3.5-5.6 NX iFN

This is what's called a standard or kit lens and comes boxed with the Advanced-level NX cameras. Covering wide-angle to short telephoto focal lengths, this zoom is perfect for most everyday picture-taking moments, allowing anything from a landscape to a head and shoulders image to be captured with ease. It comes with a petal-shaped lens hood to help prevent light flare and has OIS built in to counteract small movements, and aid image sharpness, when hand-holding.

SPECIFICATION:

Filter size: 58mm **Closest focus:** 28cm
Size: 63x65.1mm **Weight:** 198g

**GREAT FOR:** ALL-ROUND

20-50mm

f/3.5-5.6 NX iFN

As with the 18-55mm lens on the left, this is the standard or kit lens that comes bundled with beginner-level NX cameras. It covers a focal length range that is perfect for those everyday events you want to capture, giving you a great deal of photographic flexibility. Being both compact and lightweight, it reinforces the ethos of the NX being an everyday camera for capturing the ordinary and the extra ordinary things in life, with high quality optics and fast, accurate autofocus.

SPECIFICATION:

Filter size: 40.5mm **Closest focus:** 28cm
Size: 64x39.8mm **Weight:** 119g



GREAT FOR: ALL-ROUND



30mm Pancake

f/2.0 NX PRIME LENS

This is the second in the current NX prime lens line up and follows on from the slightly more wide-angle 20mm. This too takes advantage of the increased optical performance prime lenses have and has that ultra-fast f/2.0 aperture. With the APS-C crop factor, this lens equates to what would have been a 50mm lens in the days of film (around 46mm in this case), and gives a perspective to your images that's close to the human eye, yet is just 21.5mm deep – hence the term 'Pancake'!

SPECIFICATION:

Filter size: 43mm **Closest focus:** 25cm
Size: 61.5x21.5mm **Weight:** 85g



NEW IFN LENSES

Four new Samsung NX lenses* for 2011...



16mm f/2.4

An ultra wide-angle prime lens with a fast aperture and excellent optics.



18-200mm f/3.5-6.3 ED OIS

Going from wide-angle to telephoto, this lens makes the ideal travel lens.



60mm f/2.8 MACRO ED OIS

Open up to a whole new world of close-up photography.



85mm P f/1.4 ED SSA

If portraits are your thing, this lens should never leave your NX.

* A fifth lens, a 16-80mm f/3.5-4.5, will also be available later in the year.